

# Technical data sheet

## Product features



### Lava stone grill 2 cooking areas

<b>Model</b>	<b>SAP Code</b>	00010845
--------------	-----------------	----------



- Worktop material: AISI 304
- Grid size [mm x mm]: 2 x 520 x 380
- Container for liquid fat: Yes
- Independent heating zones: Separate control for each heating zone
- Removable rim: Yes
- Removable grid: Yes
- Ignition: Piezo

<b>SAP Code</b>	00010845	<b>Net Weight [kg]</b>	57.60
<b>Net Width [mm]</b>	800	<b>Power gas [kW]</b>	15.000
<b>Net Depth [mm]</b>	730	<b>Type of gas</b>	Natural gas, propane butane
<b>Net Height [mm]</b>	300	<b>Grid size [mm x mm]</b>	2 x 520 x 380

# Technical data sheet

Technical drawing

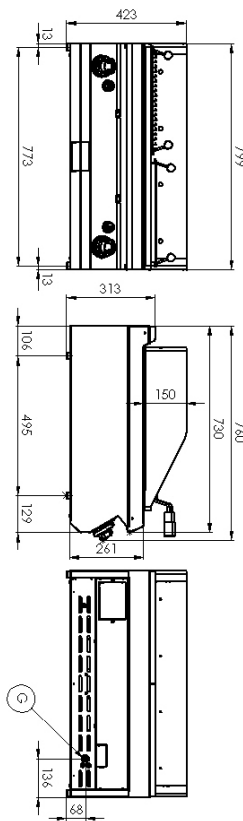


## Lava stone grill 2 cooking areas

Model

SAP Code

00010845



# Technical data sheet

Technical parameters



## Lava stone grill 2 cooking areas

**Model**

**SAP Code**

00010845

**1. SAP Code:**

00010845

**2. Net Width [mm]:**

800

**3. Net Depth [mm]:**

730

**4. Net Height [mm]:**

300

**5. Net Weight [kg]:**

57.60

**6. Gross Width [mm]:**

860

**7. Gross depth [mm]:**

820

**8. Gross Height [mm]:**

535

**9. Gross Weight [kg]:**

67.00

**10. Device type:**

Gas unit

**11. Construction type of device:**

Table top

**12. Power gas [kW]:**

15.000

**13. Ignition:**

Piezo

**14. Type of gas:**

Natural gas, propane butane

**15. Exterior color of the device:**

Stainless steel

**16. Material:**

AISI 304 top plate and cladding

**17. Worktop material:**

AISI 304

**18. Worktop Thickness [mm]:**

1.50

**19. Grid material:**

Stainless steel

**20. Service accessibility:**

Trough the frontal panel

**21. Safety thermocouple:**

Yes

**22. Container for liquid fat:**

Yes

**23. Independent heating zones:**

Separate control for each heating zone

**24. Removable rim:**

Yes

**25. Removable grid:**

Yes

**26. Grid size [mm x mm]:**

2 x 520 x 380

**27. Removable burner:**

Yes